

Sulina Road, Brixton, SW2

2 bedroom flat - conversion for sale

£535,000

Share of Freehold

Property Details

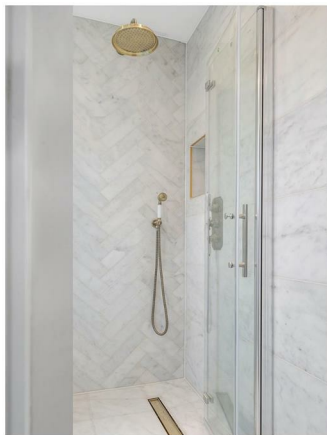
A beautifully refurbished two double bedroom, two bathroom split-level Victorian conversion flat on Sulina Road. This airy period home combines high ceilings with excellent natural light. The first floor forms the heart of the property, arranged as an impressive open-plan kitchen and reception room spanning the width of the home, thoughtfully designed for modern living. The contemporary kitchen features sleek grey cabinetry, quartz worktops and a full suite of new Bosch appliances under warranty, including a fridge/freezer, smart dishwasher and space-saving washer dryer, with ample space for both dining and relaxing. Also on this level is a peaceful second bedroom and a stylish shower room finished with Calacatta marble, underfloor heating and high-quality fittings. The principal bedroom occupies the entire top floor and benefits from a luxurious wet room. Comprehensive refurbishment includes new electrics and plumbing, new boiler with Hive thermostat, and transferable warranties, including builders 12 month warranty. *Main photo has been virtually staged with living room furnishings*

Features

- Two double bedrooms
- Two bathrooms
- Victorian conversion
- Split level
- Beautifully presented
- Demised loft
- Neighbourly road with proximity to Brixton, Streatham Hill and Balham
- Brixton a fifteen-minute walk or five-minute bus
- Share of freehold with 998 lease
- Chain-free

Council tax band C

EPC rating C (69)



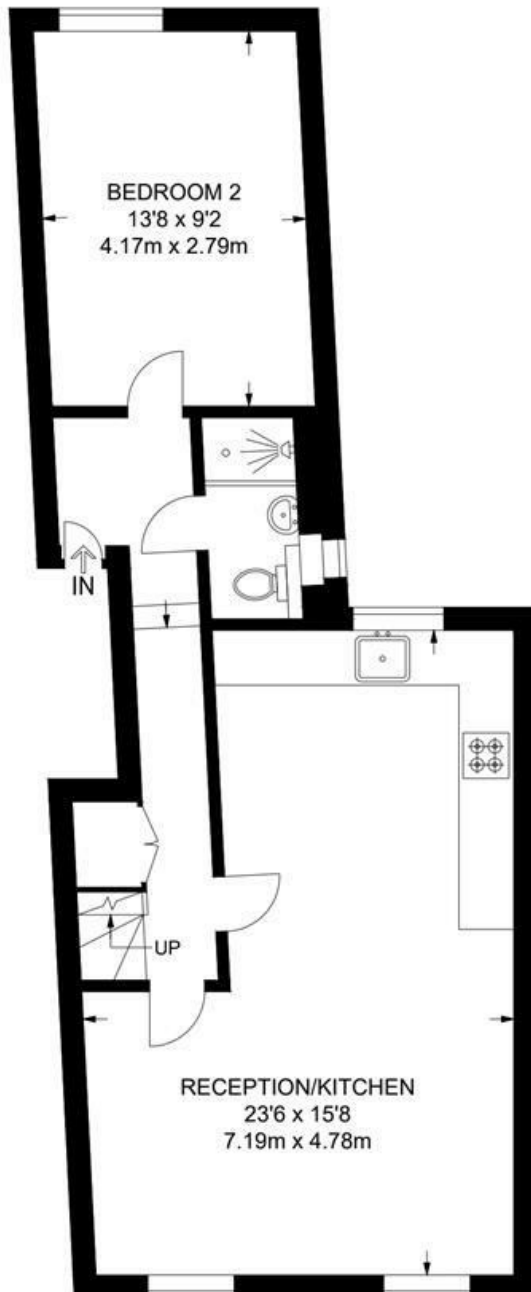


Sulina Road, Brixton, SW2

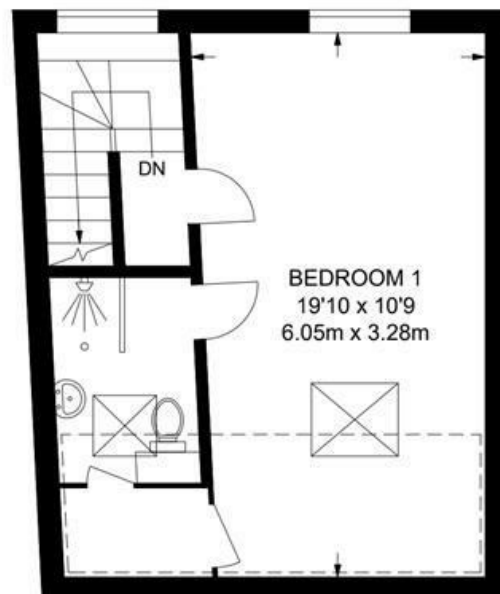
Sulina Road, SW2

2 Bedroom Flat

APPROXIMATE GROSS INTERNAL AREA: 872 SQ FT / 81 SQ M



FIRST FLOOR



SECOND FLOOR



While we try our very best, floor plans are produced as a guide only and we take no responsibility for the precise accuracy with which any property is represented.

Sulina Road, Brixton, SW2

